

**DECORATION TECHNIQUE GUIDELINES**

**SCREEN PRINTING:** MAX (6) INK COLORS

**DIGITAL PRINTING:** NO MAX COLOR LIMIT

**EMBROIDERY:** MAX (6) THREAD COLORS

**COLLAR (WRAPS TO FRONT):**

**MAX SIZE:**

**H: 1"**

**W: 15"**

**WRS RIGHT CHEST:**

**MAX SIZE:**

**H: 6"**

**W: 5"**

**WRS LEFT CHEST POCKET:**

**MAX SIZE:**

**H: 4"**

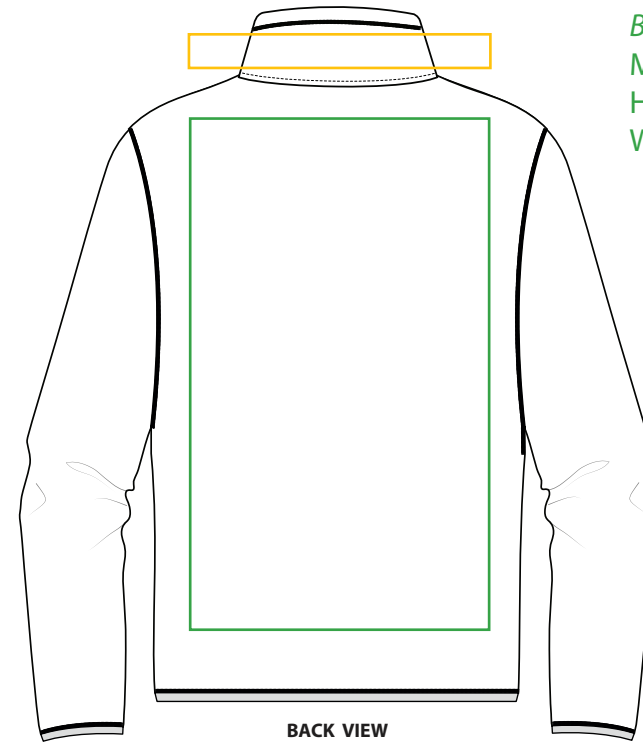
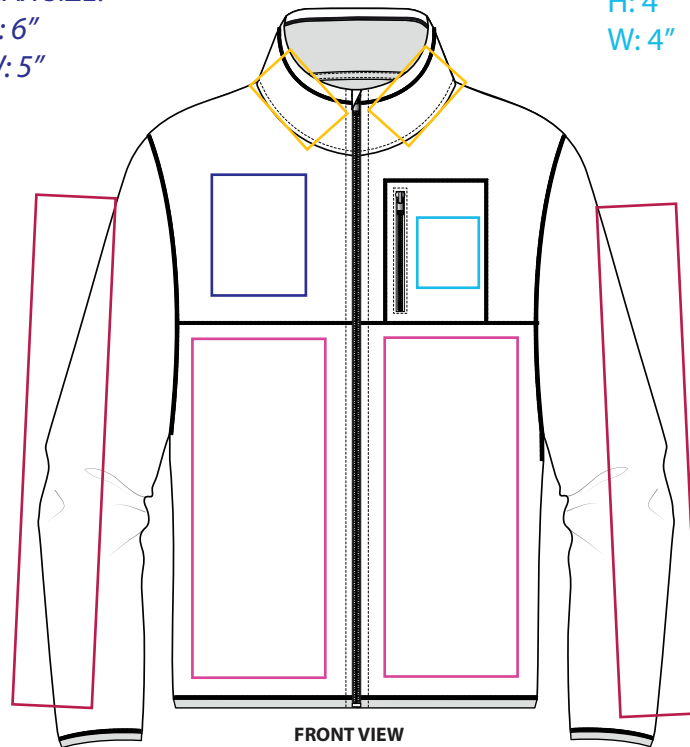
**W: 4"**

**BACK:**

**MAX SIZE:**

**H: 18"**

**W: 14"**



**EXTERIOR SLEEVE:**

**LEFT &/OR RIGHT**

**MAX SIZE:**

**H: 18"**

**W: 6"**

**BODY (LEFT OR RIGHT):**

**MAX SIZE:**

**H: 3"**

**W: 12"**

**PLACE ART ON THE NEXT PAGE**

**DECORATION GUIDELINES**

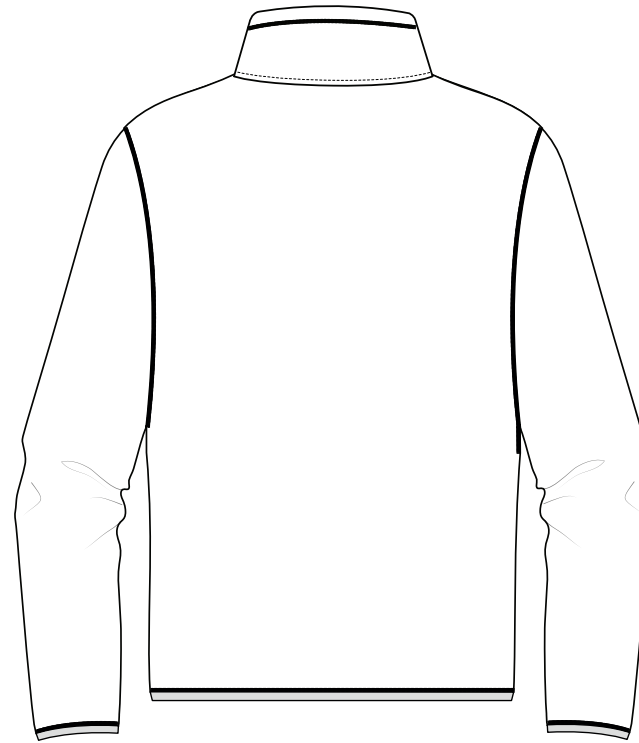
**STEP 1:** PLACE ART ON THE WHITE SKETCH BELOW.

**STEP 2:** LIST BODY COLOR (BASE FABRIC) AND GRAPHIC COLORS BELOW \*PANTONES ONLY PLEASE\*

**STEP 3:** SELECT DECORATION TECHNIQUE AT BOTTOM RIGHT



**FRONT VIEW**



**BACK VIEW**

**PANTONE SHADES :** PLEASE LIST ALL COLORS IN PANTONE PMS OR TCX SHADES BELOW

**BODY COLOR:**

**GRAPHIC COLOR(S):**

**DECORATION TECHNIQUE SELECTION:**

- SCREEN PRINTING:** MAX (6) INK COLORS
- DIGITAL PRINTING:** NO MAX COLOR LIMIT
- EMBROIDERY:** MAX (6) THREAD COLORS